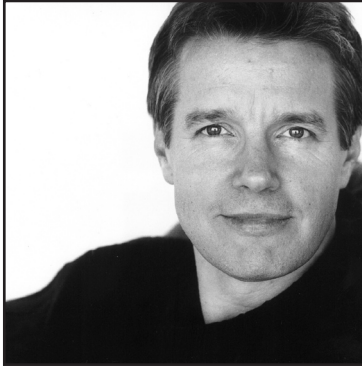


AN OAK TREE

SATURDAY, FEBRUARY 6TH, 2010 8:00 PM

AT THIS PERFORMANCE THE ROLE
OF THE FATHER WILL BE PLAYED BY

KYLE SECOR



Kyle was born in the theatrical hotbed of Federal Way, Washington. Fleeing a series of engagements at both community college and dinner theatre's he ventured to Los Angeles for the promise of equity waiver. In the 80's and 90's he appeared in a number of said equity waiver productions. He was then fortunate enough to be in the re-opening season of the Pasadena Playhouse in a production of *Look Homeward, Angel*, and several productions at LATC including Tony Richardson's *Anthony and Cleopatra*. He studied at BADA (British Academy of Dramatic Arts) in Oxford.

Notable television includes seven seasons as Tim Bayliss in *Homicide: Life on the Street* (where he also directed), *City of Angels*, *Philly*, *Veronica Mars*, and First Gentleman Rod Callaway on *Commander In Chief* with Geena Davis. Recent guest star appearances include *The Deep End*, *White Collar*, *Boston Legal* and *Women's Murder Club* Film: *Heart of Dixie*, *Delusion*, *The Doctor*, *City Slickers*, *Sleeping with the Enemy*, *Late for Dinner*, *Drop Zone*, *Inherit the Wind* and *A Wrinkle in Time*.

He never returned to Federal Way, but currently resides in Los Angeles with his incredible wife, Kari, and two amazing daughters.